



Benjamin Porter House # 7

\$ 239,000

Property Features

Year Built: 2008

Type: Apartment

Style: Aldrich

Sq Footage: 1,020

5 **2** **1**

Rooms Bedrooms Baths

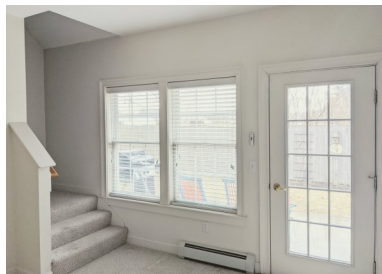
Flooring: Carpet, tile

Heat: Baseboard

AC: Mitsubishi air pump

Vehicle Storage: No

Additional Features: Fully equipped kitchen, private location, access to private outdoor patio area, unfinished 2nd floor space



THE HIGHLANDS

A GRACE MGMT COMMUNITY

30 Governors Way, Topsham, ME
(207)725-2650 | highlandsrc.com



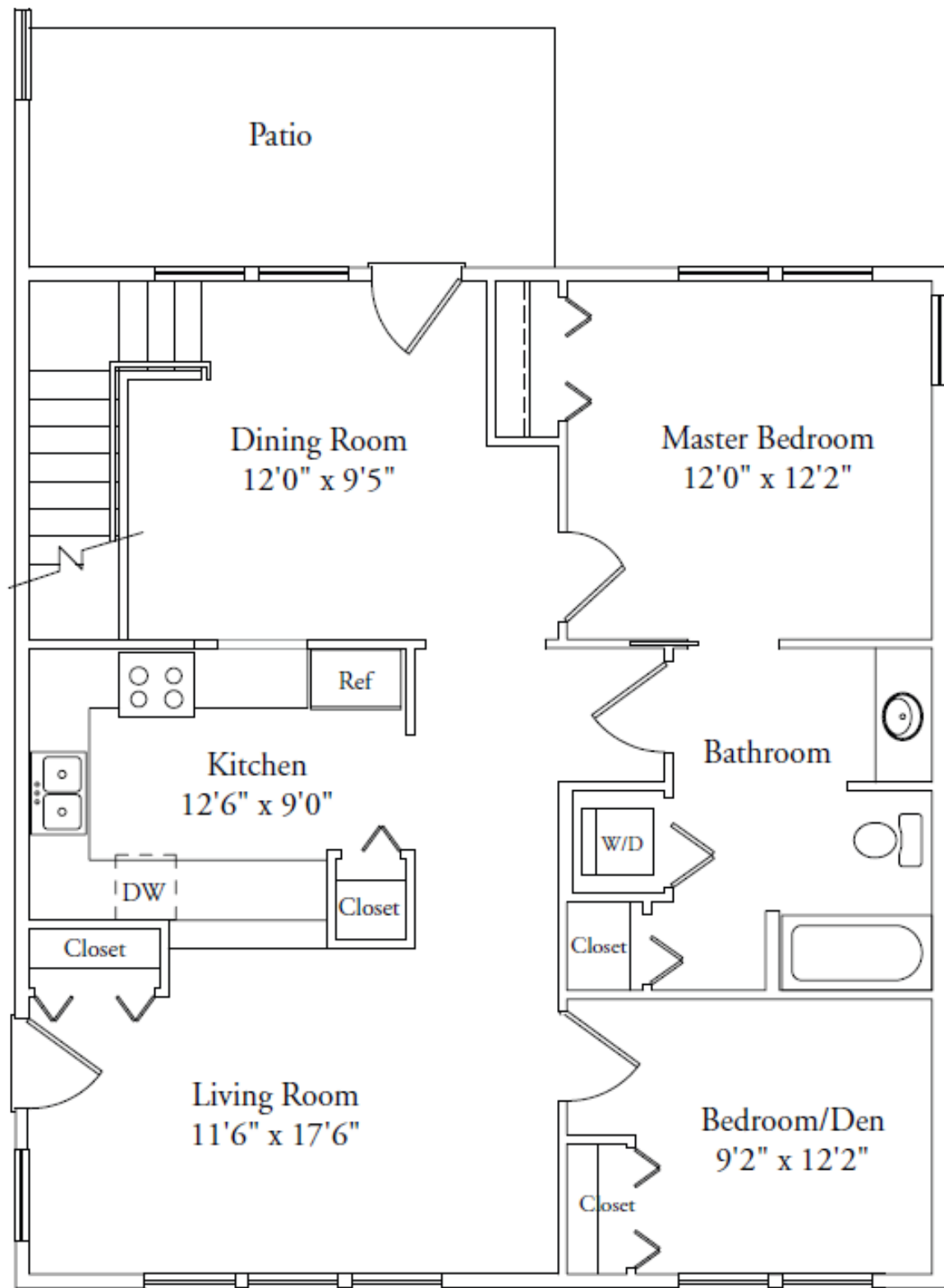
Financial Information

Monthly Contribution: \$1,632.10 **Second Person Fee:** None

Taxes: A portion included in monthly fee **Exemption:** Homestead

Heat, air conditioning, and electricity included.

Services & Amenities: Housekeeping. exterior home maintenance. grounds keeping and snow removal, town water/sewer, 24 hour emergency response, fitness center and saltwater pool, restaurant-style dining, library, transportation, outings and events. Trash and recycling services. Pet friendly community. Access to Benjamin Porter Community Room.



*** Actual floor plan, dimensions, and custom features may vary.**

Additional sq ft available on 2nd floor (unfinished).