



Benjamin Porter House # 7

\$ 235,000

Property Features

Year Built: 2008
Type: Apartment
Style: Aldrich
Sq Footage: 1,020

5 **2** **1**

Rooms Bedrooms Baths

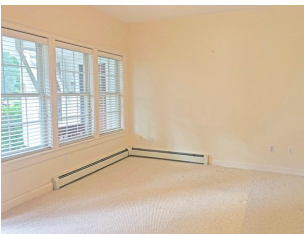
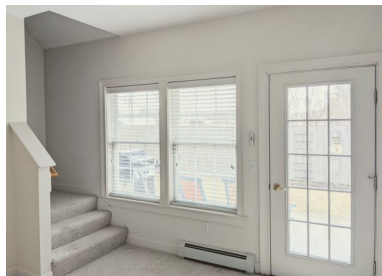
Flooring: Carpet, tile

Heat: Baseboard

AC: Mitsubishi air pump

Vehicle Storage: No

Additional Features: Fully equipped kitchen, washer/dryer, private location, access to private outdoor patio area, unfinished 2nd floor space



THE HIGHLANDS

A GRACE MGMT COMMUNITY

30 Governors Way, Topsham, ME
 (207)725-2650 | highlandsrc.com



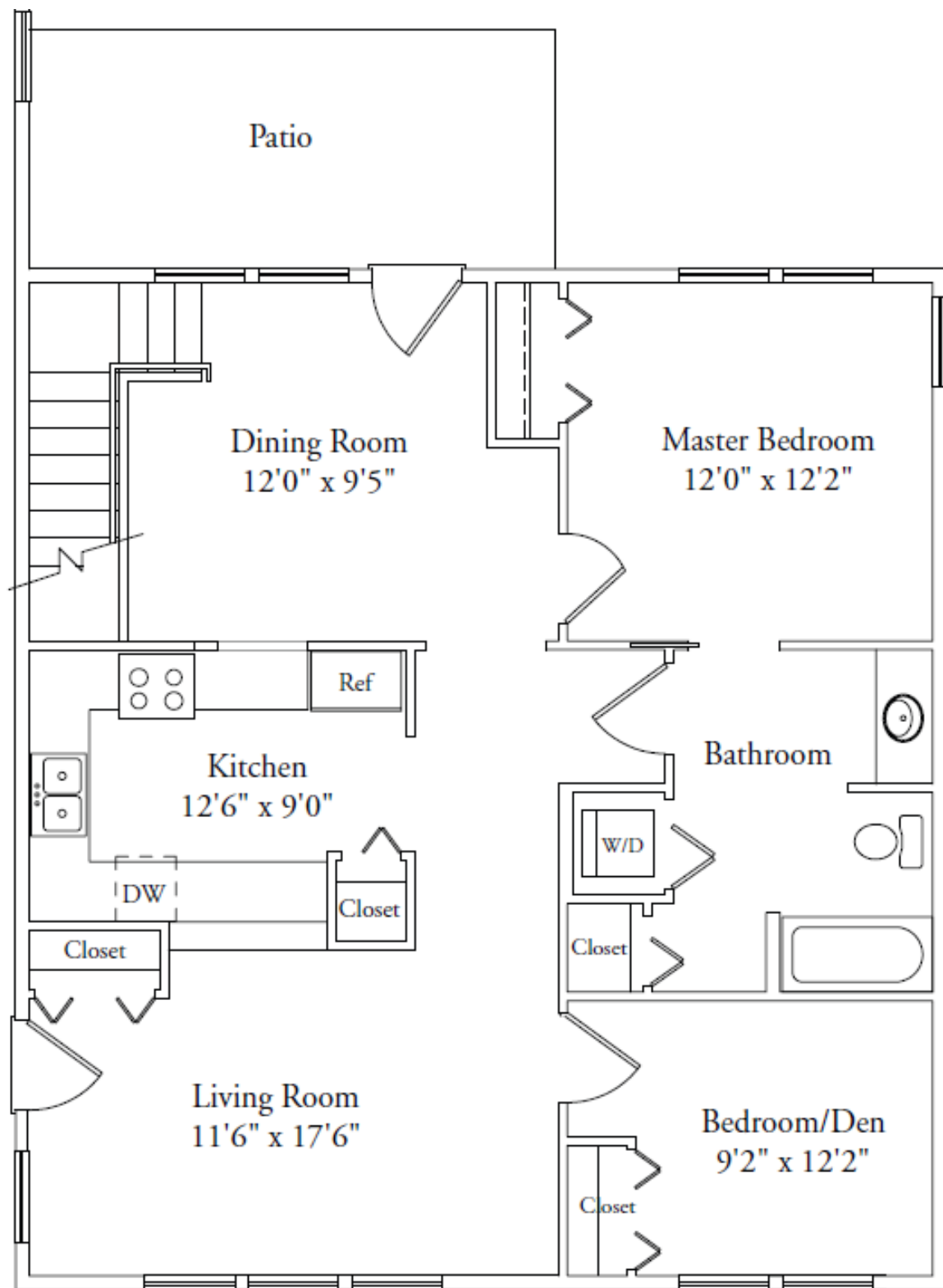
Financial Information

Monthly Contribution: \$1,583 **Utilities:** Electricity, Heat, & AC are included

Taxes: A portion are included in monthly contribution

Exemption: Homestead

Services & Amenities: Housekeeping, exterior home maintenance, grounds keeping and snow removal, town water/sewer, 24 hour emergency response, fitness center and saltwater pool, restaurant-style dining, library, transportation, outings and events. Trash and recycling services. Access to Benjamin Porter Community Room. Pet friendly community.



*** Actual floor plan, dimensions, and custom features may vary.**

Additional sq ft available on 2nd floor (unfinished).